



CY1980 FLORAL SWEATER FESTIVAL

Measurements

To fit Bust	32-34	36-38	40-42	in
	81-86	92-97	102-107	cm
Actual Measurement	40	42	44	in
	102	107	112	cm

Materials

Cygnnet Festival 200g X 4 balls shade 6877 Strawberry Fields for main yarn (M)

One ball of Cygnnet Aran 100g shade 21Black for contrast yarn (C)

A pair of 5mm (UK 6) knitting needles

ABBREVIATIONS

Approx = Approximate(ly)

Beg = Begin(ning)

Cont = Continue(ity)

Dec = Decrease(ing)

Inc = Increase(ing)

M = Main yarn

P = Purl

Patt = Pattern

Rem = Remaining

Rep = Repeat

RS = Right side

St(s) = Stitch(es)

Stst = stocking stitch
(1 row K, 1 row P)

WS = Wrong side

TENSION

20 sts and 26 rows to 4 in [10 cm] measured over stocking stitch on 5 mm needles

IT IS IMPORTANT TO WORK TO THE STATED TENSION IN ORDER TO OBTAIN THE CORRECT MEASUREMENTS

IF YOUR TENSION SQUARE IS TOO SMALL USE A LARGER NEEDLE, IF TOO LARGE USE A SMALLER NEEDLE

NOTE: The instructions are written for smallest size. If changes are necessary for larger sizes the instructions will be written thus (). When only one set of figures is given this applies to all sizes.

BACK

Using M, cast on 99[105:109] sts.

Row 1: k1, *p1, k1; rep from * to end

Row 2: p1, *k1, p1; rep from * to end

Last 2 rows form 1x1 rib. Cont in rib for 7.5cm[3 ins] ending on Row 2.

Cont in stst until Back measures 28cm [11 ins] from beg ending with rs facing for next row.

Commence Fairisle Pattern

Strand yarns not in use loosely across back of work

1st row: K1M, * 1C, 1M, rept from * to end.

2nd row: P1C, *1M, 1C, rept from * to end.

3rd row: as 1st row.

4th row: using M Purl all across row, inc one st at centre of row for 1st and last size only.

100[105:110] sts

Now work 3rd to 21st rows from chart. RS rows are K, WS rows are P.

Next row: using M Purl all across row, dec one st at

centre of row for 1st and last size only. 99[105:109] sts

Next row: K1M, * 1C, 1M, rept from * to end.

Next row: P1C, *1M, 1C, rept from * to end.

Next row: as 1st row. Break off C. **

Commencing with a P row cont in stst with M until Back measures 55 cm [21 ½ in] from beg ending with rs facing for next row.

Shape Shoulders

Cast off 17[18:19] sts at beg of next 4 rows.

Slip rem 31[33:33]sts onto a stitch holder for neckband.

FRONT

Work as given for Back to **.

Continue in stst with M until Front measures 47 cm [18 ½ in] from beg ending with rs facing for next row.

Shape Neck

Next row: K40[43:45], turn and work on these sts only.

Dec one st at neck edge in next 6[7:7] rows.34[36:38] sts

Work straight until front matches back to Shoulder ending with rs facing for next row.

Shape Shoulder

Cast off 17[18:19] sts at beg of next row. Work one row. Cast off rem 17[18:19] sts

With rs facing, slip centre 19 sts to a holder and K to end.

Complete to match first side of neck reversing shapings.

SLEEVES (Both alike)

Using M, cast on 39[45:45] sts and work 7.5cm [3 ins] in rib as given for Back, ending on Row 1.

Next row: (inc row) P11[15:13] inc in next 16[14:20] sts, P12[16:12]. 55[59:65]sts.

Continue in stst until work measures 28cm [11 ins] from beg ending with rs facing for next row.

Commence Fairisle Pattern

Strand yarns not in use loosely across back of work

1st row: K1M, * 1C, 1M, rept from * to end.

2nd row: P1C, *1M, 1C, rept from * to end.

3rd row: as 1st row.

4th row: using M Purl all across row, (inc one st at centre of row for 2nd size only 60 sts)
Now work 3rd to 21st rows from chart. RS rows are K, WS rows are P.

Next row: using M Purl all across row, dec one st at centre of row for 2nd size only. 59 sts

Next row: K1M, * 1C, 1M, rept from * to end.

Next row: P1C, *1M, 1C, rept from * to end.

Next row: K1M, * 1C, 1M, rept from * to end. Break off C.
Commencing with a P row cont in st st with M until Sleeve measures 44[45:46]cm 17[18 18]ins ending on rs row.
Cast off loosely.

NECKBAND

Join right shoulder seam.
With rs facing and using M, pick up 12[13:14]sts down left side of front neck, k19 sts from centre front holder,

pick up and K13[14:15]sts up right side of front neck and K across 31[33:33]sts from back neck holder. 75[79:81]sts

1st row K1 *p1, k1; rep from * to end.

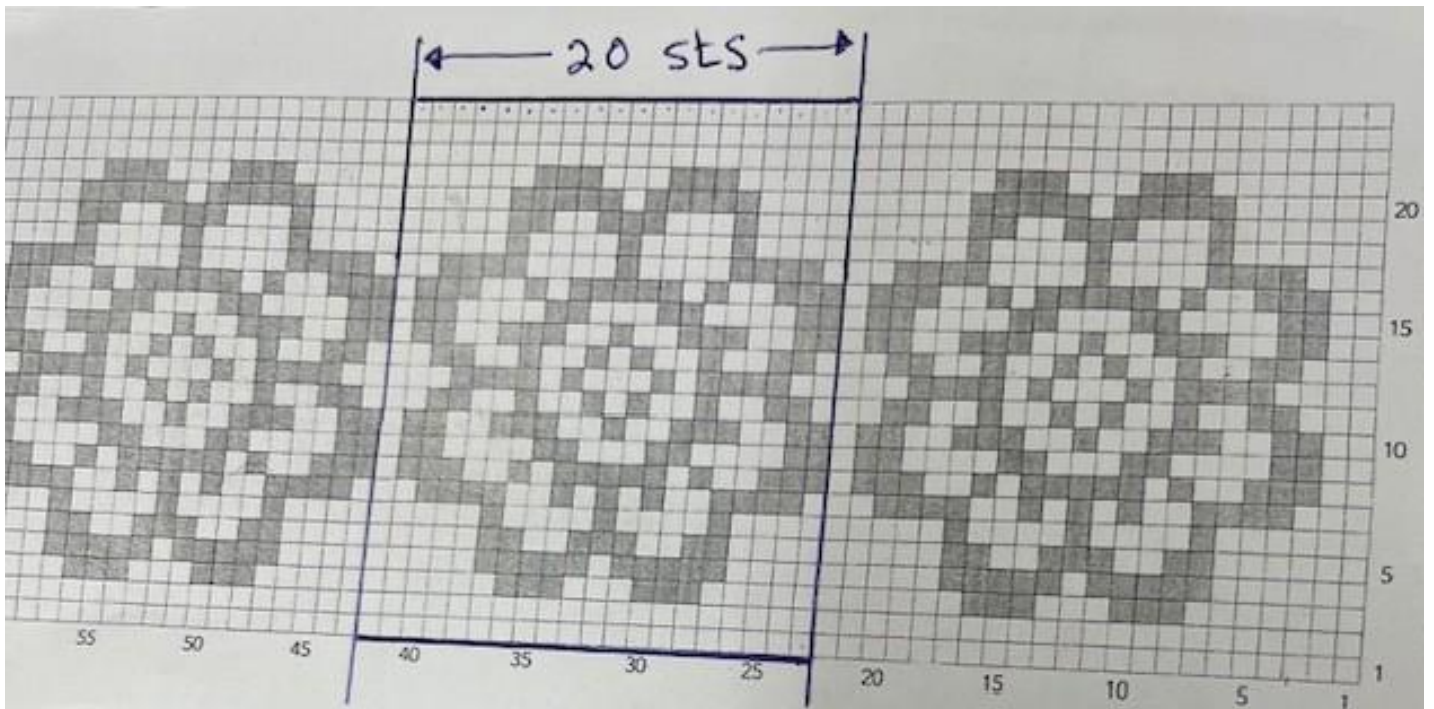
2nd row P1, * K1, P1, rep from * to end.

Repeat last 2 rows for 6 cm [2 ½ in]. Cast off in Rib.

FINISHING OFF

Join left shoulder and neckband seam. Insert sleeves
Join side and sleeve seams

CHART



Cygnets Yarns Limited

12-14 Adelaide Street, Bradford, West Yorkshire, BD5 0EA

CY1980© 2026 Designed and published by Cygnets Yarns Limited of 12-14 Adelaide Street, Bradford, BD5 0EA.

This pattern is protected by the law of Copyright of the United Kingdom and may not be reproduced or copied. This pattern may be used for manufacturing purposes- up to a limit of 20 garments. For anything more than this, please contact Cygnets Yarns. All other rights are expressly reserved by Cygnets Yarns Ltd.